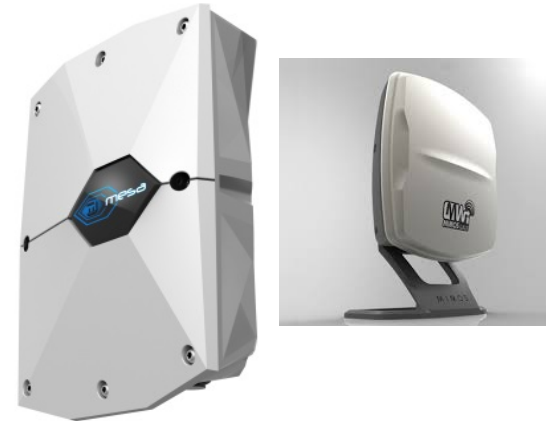


LOTUS FORMULA SDN BHD PRODUCTS PORTFOLIO



Outdoor Wireless Access Point*

- Multi-protocol broadband Wireless Access Point Equipment for Outdoor Use
 - ✧ Wireless gateway
 - ✧ Wireless Hotspot
 - ✧ Wireless 5.4GHz point to point
 - ✧ Wireless 5.4GHz MESH
- ✧ Features
 - ✧ IP65 robustness
 - ✧ Modular design
 - ✧ High throughput up to 5 km for point – to point
- ✧ Applications
 - ✧ High speed broadband infrastructure
 - ✧ Smart cities with metro scale deployment
 - ✧ Wireless infrastructure for surveillance systems
 - ✧ Wireless infrastructure for agriculture
 - ✧ Wireless infrasture for high speed campus network

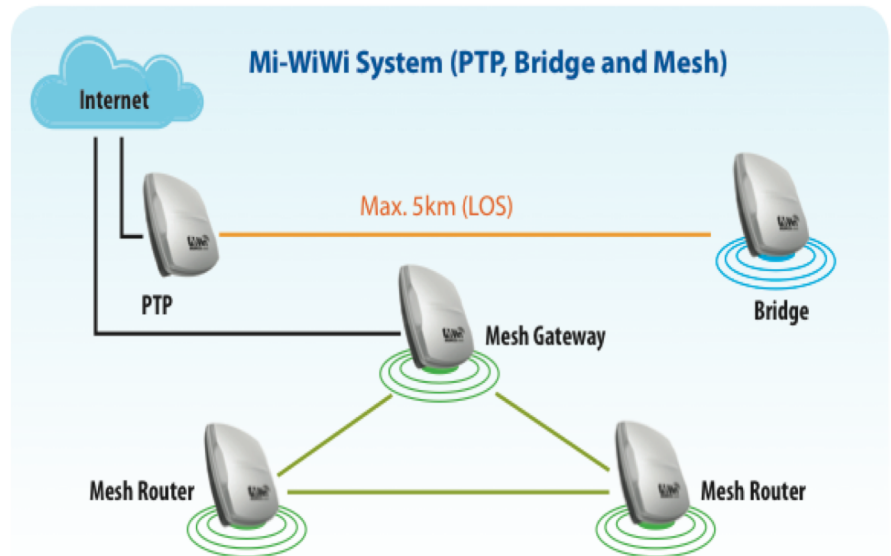


**Technology by MIMOS*



Gateway and Point to Point Access Point

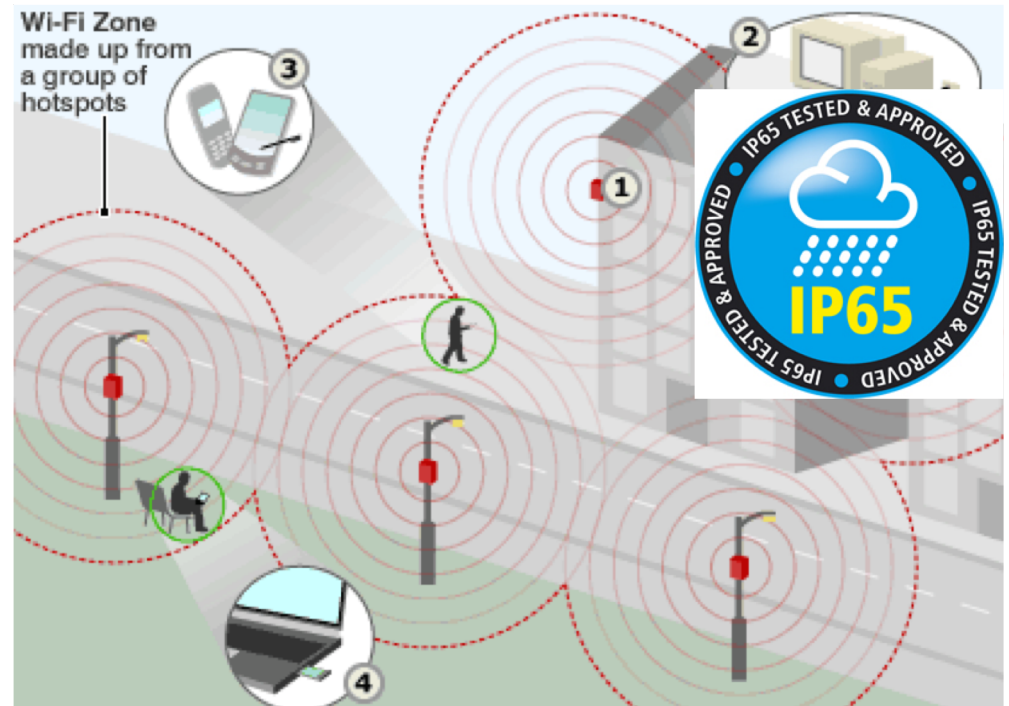
- Design for outdoor use
 - IP65 robustness
 - Water and dust proof
- Modular design
 - WiFi, WiMax or HSPDA
- Quadruple Play Support
 - Multicasting and IPv6 features
 - Mobility, Data, VoIP and IPTV
- Onboard storage
 - Customised content
 - Support MESH configuration
- Applications
 - Enterprise
 - Government
 - Business





Outdoor Hot Spots Access Point

- Can be connected to a router or can be use as an integral components of the router itself
- Design for outdoor use
 - IP65 robustness
 - Water and dust proof
- Onboard storage
 - Customised content
 - Support MESH configuration
 - Maximum coverage LOS 250 meter





Environmental Sensors*

- Wi-Fi Embedded Environmental Sensor
 - Dissolved Oxygen
 - Temperature sensor
 - pH sensor
 - Acidity sensor

Features

- Real time monitoring
 - Wireless communication protocol
 - IP67 for water immersion
-
- Applications
 - Aquaculture
 - Agriculture
 - Warehousing
 - River monitoring
 - Water quality monitoring



**Technology by MIMOS*



Sensor's Fact Sheet

DISSOLVED OXYGEN SENSOR

Reads

- Full range dissolved oxygen readings from 0.01 to +35.99 mg/L
- Accurate dissolved oxygen readings down to the hundredths place (+/- 0.2)
- Temperature compensation
- Salinity compensation
- Pressure compensation
- Flexible calibration protocol supports one point or two calibration
- Calibration required only once per year with Dissolved Oxygen probe
- Single reading or continuous reading modes
- Data format is ASCII

pH SENSOR

Reads

- Full range pH reading from .001 – 14.000
- Accurate pH readings down to the thousandths place (+/- 0.02)
- Temperature dependent or temperature independent readings
- Flexible calibration protocol supports single point, 2 point, or 3 point calibration
- Calibration required only once per year with pH probe
- Single reading or continuous reading modes
- Data format is ASCII

SALINITY SENSOR

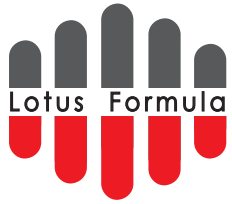
Reads

- Conductivity
- Total dissolved solids
- Practical salinity units
- Specific gravity of sea water
- Accuracy +/- 2%
- Full E.C. range from 0.07 $\mu\text{S}/\text{cm}$ to 500,000+ $\mu\text{S}/\text{cm}$
- Temperature dependent or temperature independent readings
- Flexible calibration protocol supports single point or dual point calibration
- Calibrate to any E.C. value
- Data format is ASCII

TEMPERATURE SENSOR

Reads

- Extreme sensing range from -126.000 °C to 1254 °C
- Accurate temperature readings down to the thousandths place (+/- 0.002)
- Temperature output in Celsius, Kelvin or Fahrenheit
- On-board data logger storing up to 50 individual temperature readings
- Optional single point calibration
- Single reading or continuous reading modes
- Data format is ASCII

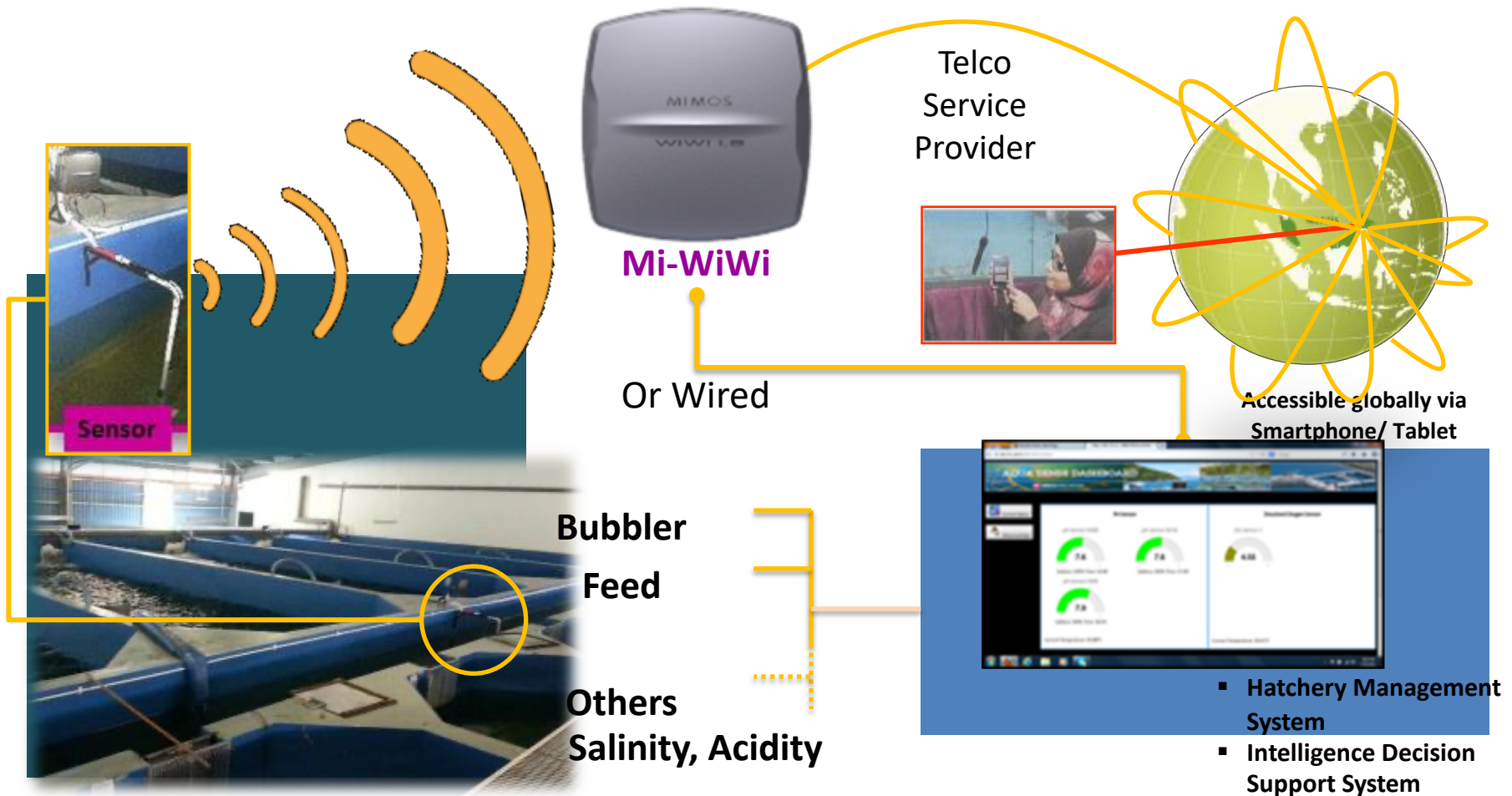


Applications

- Smart Campus
- Smart Cities
- Aquaculture
- River Monitoring
- Water Quality Monitoring
- Agriculture Smart Sensor



Smart Agri. Sensors





Proposed River Monitoring and Maintenance

**In-situ /
Continuous
Parameters**

**Temp
Dissolved O2
Salinity
Acidity /
Alkalinity
CCTV**



**Deployment
Options**

**Scalability/
Wireless
connectivity /
WiFi Coverage**



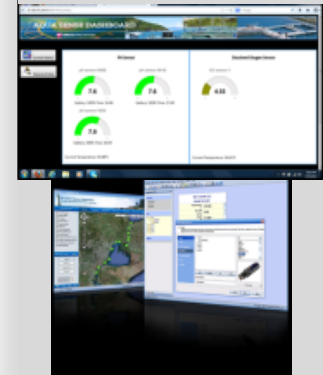
**Centralize /
Remote
Monitoring /
Surveillance**

**Command
Control Center
/
Mobile apps**



**Software and
Data
Management /
Command
Center**

**Triggering /
Alert /
Analytical**



Thank you